

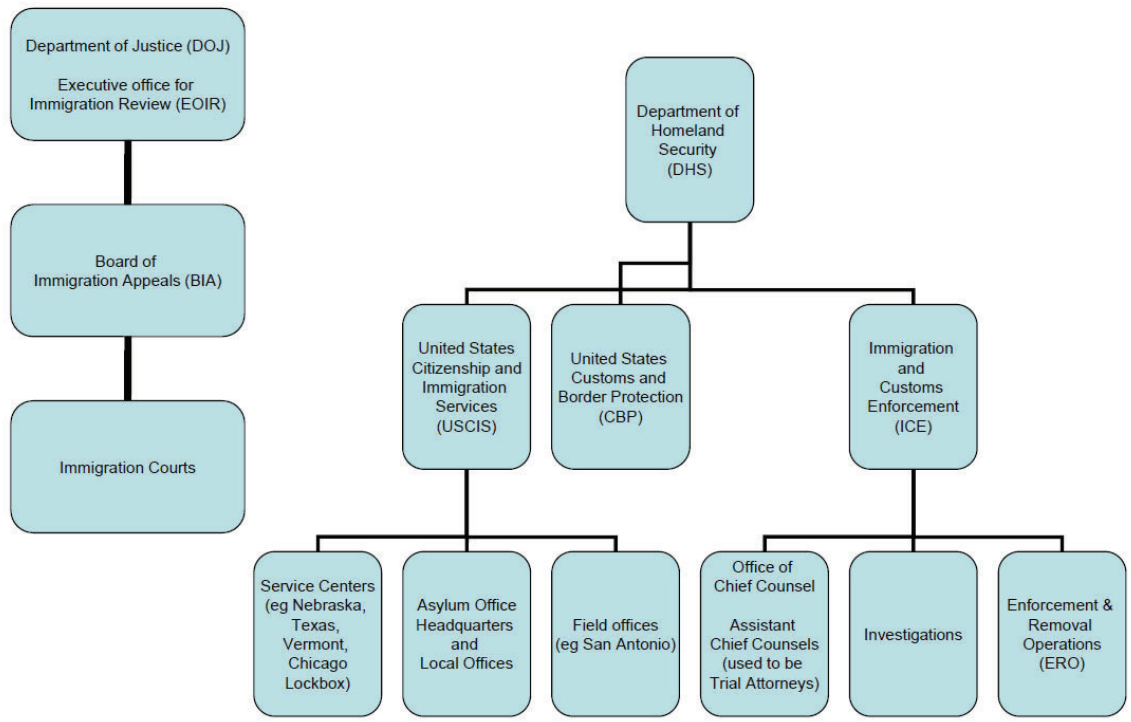
# STRUCTURE OF THE U.S. IMMIGRATION SYSTEM

*Prepared by Sarah E. Woelk, Michelle L. Saenz-Rodriguez &  
Mona Gupta*

*Presented by: Mona Gupta and Michelle Saenz-Rodriguez*

1

## RELEVANT GOVERNMENT ENTITIES



2

## Who are the players in this Chaotic Game?

### *Department of Homeland Security*

- Customs and Border Protection (CBP)
- Immigration and Customs Enforcement (ICE)
- United States Citizenship and Immigration Services (USCIS)

### *More Players*

- Department of State
  - National Visa Center
  - US Embassies & Consulates
- Department of Labor

3

## Where Do I find the Rules?

### *Statutes & Regulations*

- Immigration and Nationality Act (INA)
  - 8 USC § 1101 et seq
- Regulations
  - 8 CFR

### *Other Sources*

- Case law
  - Immigration Court
  - Board of Immigration Appeals
  - Federal Court
  - Administrative Appeals

4

Find the full text of this and thousands of other resources from leading experts in dozens of legal practice areas in the [UT Law CLE eLibrary \(utcle.org/elibrary\)](https://utcle.org/elibrary)

Title search: Structure of the U.S. Immigration System

Also available as part of the eCourse

[2019 Fundamentals of Immigration and Nationality Law eConference](#)

First appeared as part of the conference materials for the  
2019 Fundamentals of Immigration and Nationality Law session  
"Immigration Agencies and Basic Immigration Terminology"