

Shifting into First: Early Development of the Commercial Truck Case

UT CLE

2018 Car Crash Seminar & Primer

August 9-10, 2018

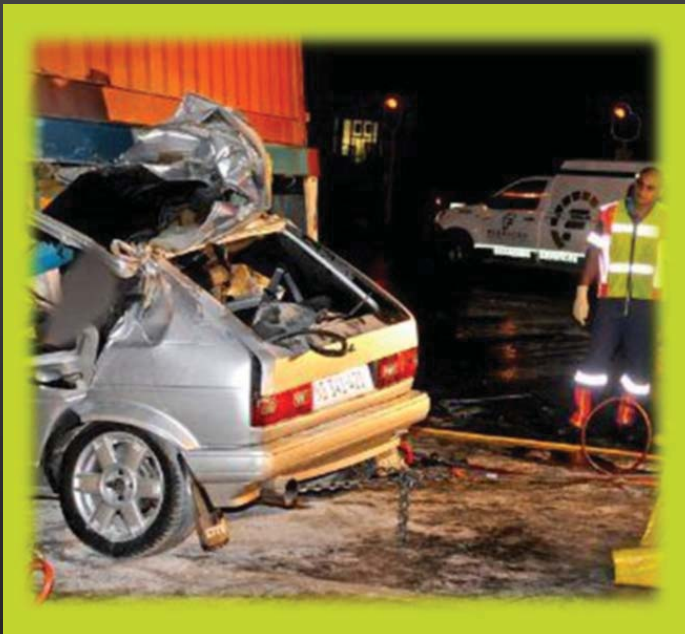
Presented by:

Mike Davis

**Slack Davis
Sanger** 



18-Wheelers can be scary



**Big
Vehicle**

**Don't
know
Vehicle's
condition**

**Don't know driver or
driver's condition:**

- What training?
- Driving for how long?
- What has he been doing?

Commercial Motor Vehicle?



YES!

Commercial Motor Vehicle?



MAYBE

Not Just a Big Car Wreck



≠



Not Just a Big Car Wreck



Need to
Move
Quickly



Access to the truck



Preservation of trucking
company documents

Letter



Do
Computer
Research

Find the full text of this and thousands of other resources from leading experts in dozens of legal practice areas in the [UT Law CLE eLibrary \(utcle.org/elibrary\)](http://utcle.org/elibrary)

Title search: Shifting Into First: Early Development of the Commercial Truck Case

Also available as part of the eCourse

[2018 The Car Crash eConference](#)

First appeared as part of the conference materials for the
2018 The Car Crash Seminar session

"Shifting Into First: Early Development of the Commercial Truck Crash Case"