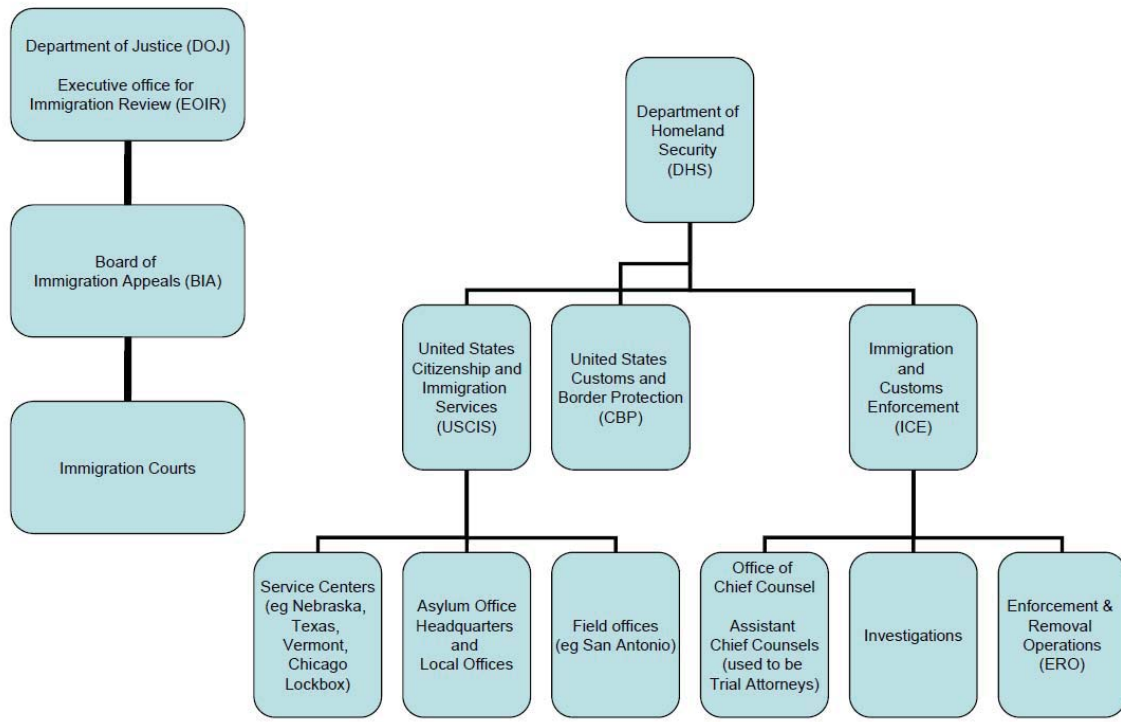


# Immigration Basics

## STRUCTURE OF THE U.S. IMMIGRATION SYSTEM

## RELEVANT GOVERNMENT ENTITIES



## Department of Homeland Security

- Customs and Border Protection (CBP)
- Immigration and Customs Enforcement (ICE)
- United States Citizenship and Immigration Services (USCIS)

## More Government Players

- Department of Labor
- Department of State
  - National Visa Center
  - U.S. Embassies and Consulates

## Statutes and Regulations

- Immigration and Nationality Act (INA)
  - 8 USC § 1101 et seq
- Regulations
  - 8 CFR

Find the full text of this and thousands of other resources from leading experts in dozens of legal practice areas in the [UT Law CLE eLibrary \(utcle.org/elibrary\)](https://utcle.org/elibrary)

## Title search: Immigration Agencies and Basic Immigration Terminology

Also available as part of the eCourse

[2018 Fundamentals of Immigration and Nationality Law eConference](#)

First appeared as part of the conference materials for the  
2018 Fundamentals of Immigration and Nationality Law session  
"Immigration Agencies and Basic Immigration Terminology"