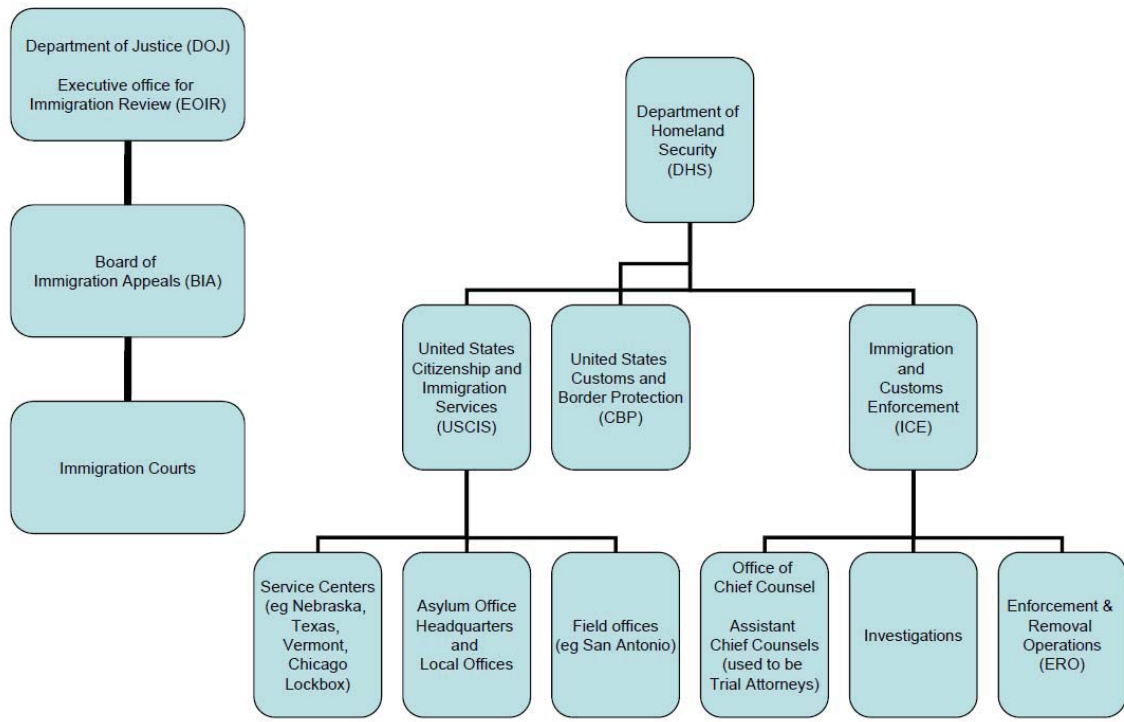


Immigration Basics

STRUCTURE OF THE U.S. IMMIGRATION SYSTEM

RELEVANT GOVERNMENT ENTITIES



Department of Homeland Security

- Customs and Border Protection (CBP)
- Immigration and Customs Enforcement (ICE)
- United States Citizenship and Immigration Services (USCIS)

More Government Players

- Department of Labor
- Department of State
 - National Visa Center
 - U.S. Embassies and Consulates

Statutes and Regulations

- Immigration and Nationality Act (INA)
 - 8 USC § 1101 et seq
- Regulations
 - 8 CFR

Find the full text of this and thousands of other resources from leading experts in dozens of legal practice areas in the [UT Law CLE eLibrary \(utcle.org/elibrary\)](https://utcle.org/elibrary)

Title search: Immigration Agencies and Basic Immigration Terminology

Also available as part of the eCourse

[The Basics of United States Immigration and Nationality Laws, Agencies, and Terminology](#)

First appeared as part of the conference materials for the
2018 Fundamentals of Immigration and Nationality Law session
"Immigration Agencies and Basic Immigration Terminology"