

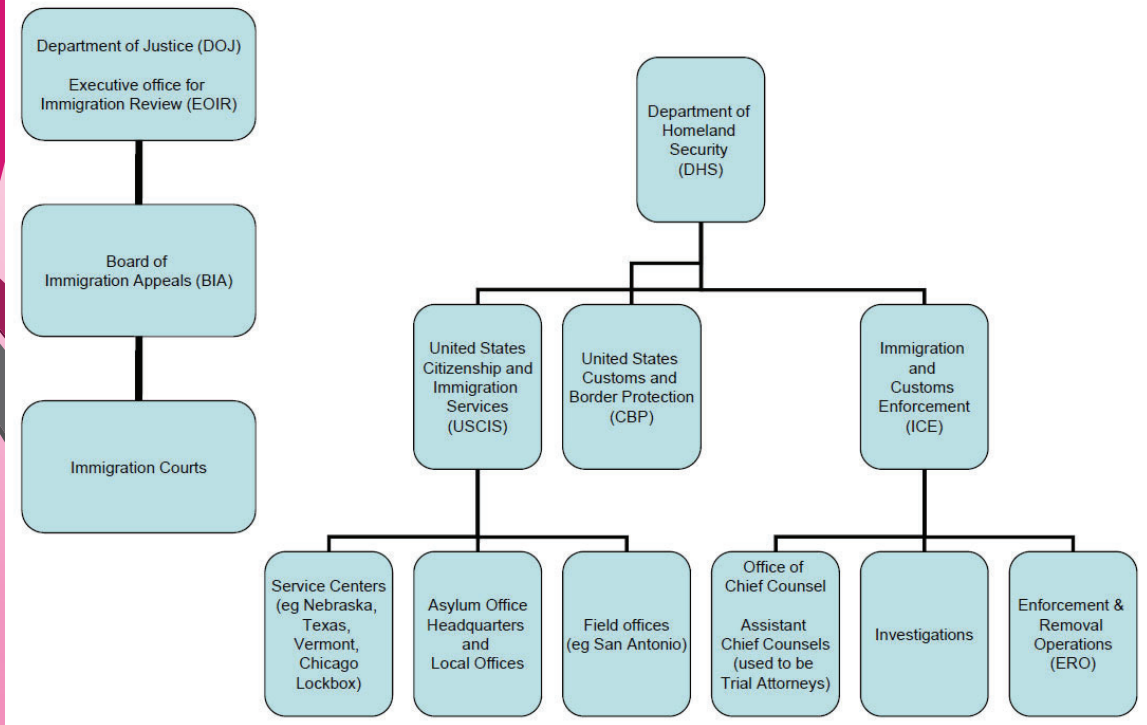
STRUCTURE OF THE U.S. IMMIGRATION SYSTEM

Prepared by Sarah E. Woelk, Michelle L. Saenz-Rodriguez &
Mona Gupta

Presented by: Mona Gupta and Michelle Saenz-Rodriguez

1

RELEVANT GOVERNMENT ENTITIES



2

Who are the players in this Chaotic Game?

Department of Homeland Security

- *Customs and Border Protection (CBP)*
- *Immigration and Customs Enforcement (ICE)*
- *United States Citizenship and Immigration Services (USCIS)*

More Players

- *Department of State*
 - *National Visa Center*
 - *US Embassies & Consulates*
- *Department of Labor*

3

Where Do I find the Rules?

Statutes & Regulations

- *Immigration and Nationality Act (INA)*
 - *8 USC § 1101 et seq*
- *Regulations*
 - *8 CFR*

Other Sources

- *Case law*
 - *Immigration Court*
 - *Board of Immigration Appeals*
 - *Federal Court*
 - *Administrative Appeals*

4

Find the full text of this and thousands of other resources from leading experts in dozens of legal practice areas in the [UT Law CLE eLibrary \(utcle.org/elibrary\)](https://utcle.org/elibrary)

Title search: Structure of the U.S. Immigration System

Also available as part of the eCourse

[The Basics of United States Immigration and Nationality Laws, Agencies, and Terminology](#)

First appeared as part of the conference materials for the
2019 Fundamentals of Immigration and Nationality Law session
"Immigration Agencies and Basic Immigration Terminology"