

Artificial Intelligence and Machine Learning: Legal and Ethical Considerations

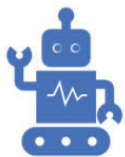
Maria De-Arteaga, PhD - The University of Texas at Austin
Hong Shi – Hanes & Boone, LLP
Adam Berry – Fourth Enterprises, LLC



1

1

I. What is Artificial Intelligence (AI) and Machine Learning (ML)?



II. Bias in AI & ML

III. Regulation & Legal Ethics Guidance

IV. AI in the Practice of Law

V. AI & IP

2

2

What is Artificial Intelligence and Machine Learning?

3

3



4



Current Technology



5

5

What's the Difference?

- **Artificial Intelligence** is a process of autonomous machine intelligence
- **Machine Learning** is one of the specific scientific methods used in building AI.
- ML enables AI by applying sets of rules on data sets

Artificial Intelligence:

Mimicking the intelligence or behavioural pattern of humans or any other living entity.

Machine Learning:

A technique by which a computer can "learn" from data, without using a complex set of different rules. This approach is mainly based on training a model from datasets.

Deep Learning:

A technique to perform machine learning inspired by our brain's own network of neurons.

6

Find the full text of this and thousands of other resources from leading experts in dozens of legal practice areas in the [UT Law CLE eLibrary \(utcle.org/elibrary\)](http://utcle.org/elibrary)

Title search: Artificial Intelligence and Machine Learning: Legal and Ethical Considerations

Also available as part of the eCourse

[Artificial Intelligence and Machine Learning: Legal and Ethical Considerations](#)

First appeared as part of the conference materials for the
34th Annual Technology Law Conference session

"Artificial Intelligence and Machine Learning: Legal and Ethical Considerations"