

# Behavioral Health: Addressing Needs Through Local Partnerships

33<sup>rd</sup> Annual Health Law Conference  
April 7, 2022



Sally E. Taylor, MD  
Senior Vice President/Chief of Behavioral Health  
University Health, San Antonio, Texas  
Chair, Behavioral Health Committee, STRAC








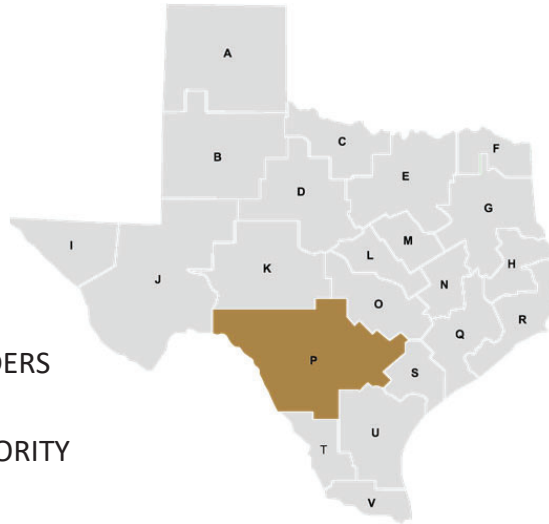
Southwest Texas Regional Advisory Council:  
Southwest Texas Crisis Collaborative









# STRAC: Who We Are

Mission: To reduce death / disability related to trauma, disaster, and *acute illness* through implementation of *well-planned and coordinated regional emergency response systems*.

-  22 COUNTIES  
26,000 SQUARE MILES
-  2.4M PEOPLE
-  71 EMS AGENCIES
-  4 AIR MEDICAL PROVIDERS
-  PUBLIC HEALTH AUTHORITY



-  63 HOSPITALS
  -  2 LVL I TRAUMA CENTERS
  -  16 CARDIAC CENTERS
  -  17 STROKE CENTERS
  -  BEHAVIORAL HEALTH
- 

## STRAC Organization

### Acute Care

- Trauma/Cardiac/Stroke
- EMS and EMS Medical Directors
- Air Medical
- Pediatric
- MIH
- Perinatal
- MEDCOM
- EMS EMR
- Clinical Registries

### Behavioral Health

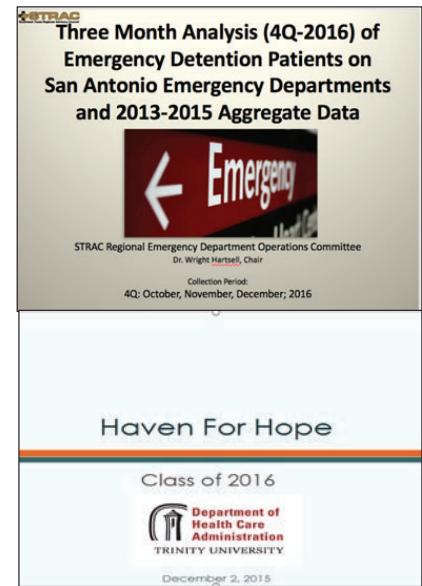
- Southwest Texas Crisis Collaborative Steering Committee
- Law Enforcement Navigation
- Homeless Acute Care
- ER Crisis Transfer
- Social Determinants of Health
- Data Collection

### Emergency Preparedness & Response

- Healthcare Coalition
- Regional Medical Operations Center
- Rescue Team
- Logistics
- EMTF
- Disaster IT
- Patient Tracking
- AssetTrak

# STCC Background: What We Learned (2016)

- 9,000+ Emergency Detentions annually
- Nearly 1/2 *only* needed a medical screening prior to psychiatric care
- Were going to hospital ERs & became part of the national “boarding” problem
- Lack of integration between medical/behavioral health care system on the Haven for Hope homeless campus
- Haven for Hope: #1 spot for 9-1-1 calls



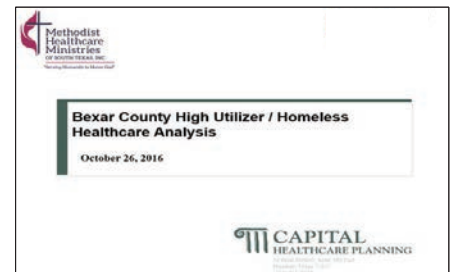
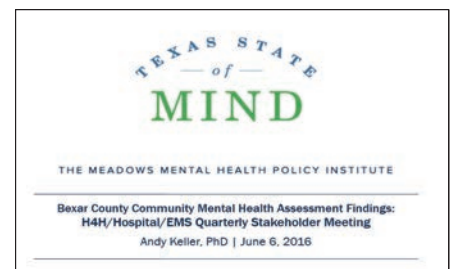
# STCC Background: What We Learned

- Study of BH System in Bexar County
- Commissioned and funded by MHM
- Numerous findings, most notably:

Cross-payer effort must be developed for **assertive and intensive ongoing services** for the highest utilizers of:

- Jail
- Crisis Services
- Homeless Shelters
- Emergency Response System
- Hospital Emergency Departments
- Inpatient Care

*What we knew anecdotally to be problems in our system now had true COSTS associated.*



Find the full text of this and thousands of other resources from leading experts in dozens of legal practice areas in the [UT Law CLE eLibrary \(utcle.org/elibrary\)](https://utcle.org/elibrary)

## Title search: Behavioral Health: Addressing Needs Through Local Partnerships

Also available as part of the eCourse

[Hooked on CLE: June 2022](#)

First appeared as part of the conference materials for the  
33<sup>rd</sup> Annual Health Law Conference session

"Texas' Mental Health System: Overview and Local Solutions to Address Gaps"