

Advisory Services

PAULETTE GIBBINS | EXECUTIVE DIRECTOR, ULI AUSTIN



0

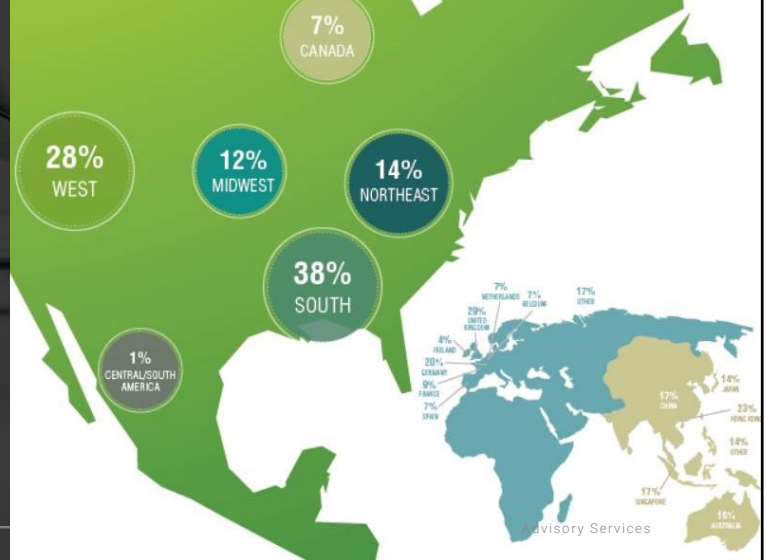
Urban Land Institute GLOBAL CONNECTIONS WITH LOCAL IMPACT

Our mission is to shape the future of the built environment for transformative impact in communities worldwide

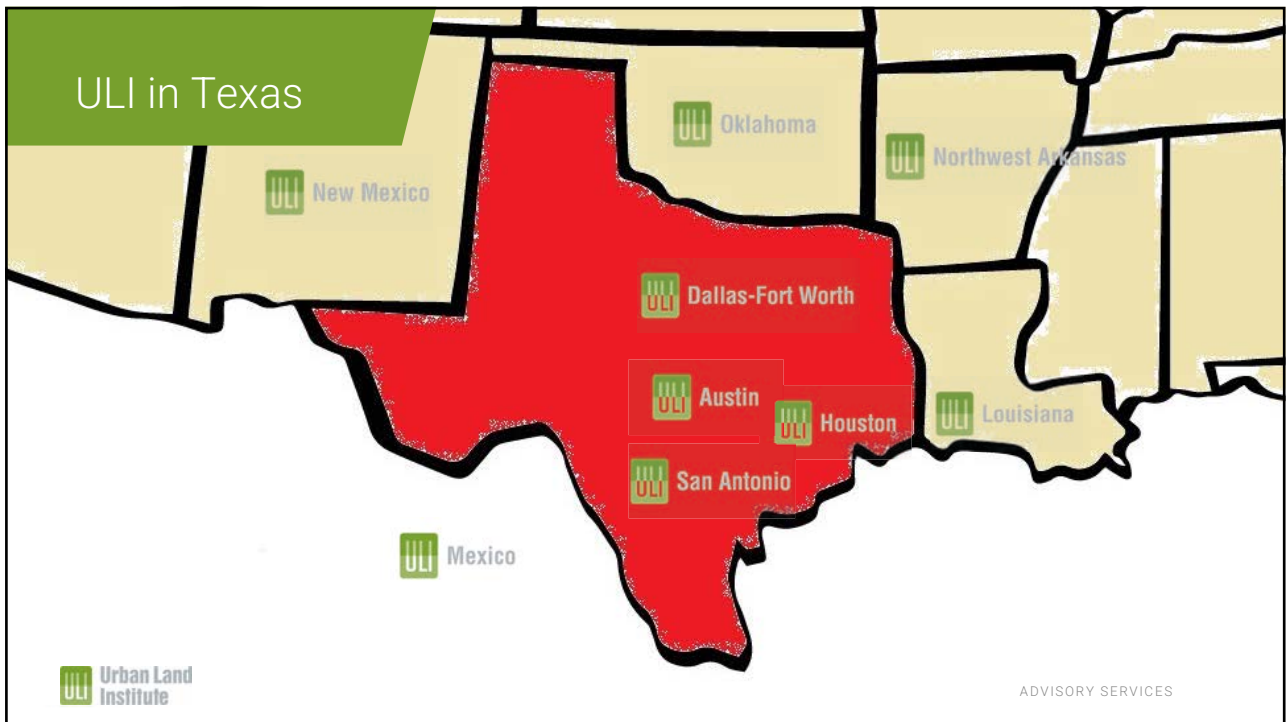
- **CONNECT** active, passionate, diverse members through the foremost global network of interdisciplinary professionals.
- **INSPIRE** best practices for equitable and sustainable land use through content, education, convening, mentoring, and knowledge sharing.
- **LEAD** in solving community and real estate challenges through applied collective global experience and philanthropic engagement.

45,000+
ULI members

Representing the real estate and land use industry in over 80 countries




1



2

Solve your city's most complex real estate and land use challenges with ULI's Advisory Services.



3

What is a ULI Advisory Services?

- Programs to utilize the real estate expertise of our ULI members to assist government and nonprofit organizations with specific land use, or real estate development issues.
- Broad array of issues that may include infrastructure, water, affordable housing, funding sources, placemaking, partnerships, area planning goals, etc.
- We do not provide work product such as comprehensive planning, engineering, or land planning. We provide the framework, guidelines and road map to a solution, which could lead to professional service engagements from private vendors as the client implements its particular solution plan.



ADVISORY SERVICES

4

How Does ULI Add Value?

ULI BRAND

Largest and oldest real estate professional organization focusing on best practices. While global in scope, we impact Austin and surrounding areas locally.

MULTIDISCIPLINARY PANEL

Non-partisan, outside perspectives offer pragmatic methods to kickstart an initiative and identify a direction.

INCREASE OPPORTUNITES

Introduce to new opportunities or partners such as a government funding program or investor who has been involved in similar projects.

COMPREHENSIVE REPORT

Via our expert panelists and a technical writer, this report provides objective advise that will promote responsible land use.

STRATEGIC SOLUTIONS

Third-party expertise can help gain regulatory approvals and/or attract capital, as it will have the TAP report as backup or proof of concept.



ADVISORY SERVICES

5

Find the full text of this and thousands of other resources from leading experts in dozens of legal practice areas in the [UT Law CLE eLibrary \(utcle.org/elibrary\)](https://utcle.org/elibrary)

Title search: Advisory Services

Also available as part of the eCourse
[2024 Land Use eConference](#)

First appeared as part of the conference materials for the
28th Annual Land Use Conference session
"ULI Advisory Services Program"