

# A VIEW FROM ALAS ON AI IN LAW PRACTICE

**INTELLIGENCE STILL REQUIRED**

---

**RANDY J. CURATO**

Vice President—Senior Loss Prevention Counsel  
ALAS Ltd.

1

## Quick Questions

- Can you use GenAI? YES
- Must you use GenAI? NO (not yet)
- Can you ignore GenAI? NO
- Must I tell client if I use? YES (for now)
  
- Should I use GenAI? That is the big issue. . .
- How? With caution

2

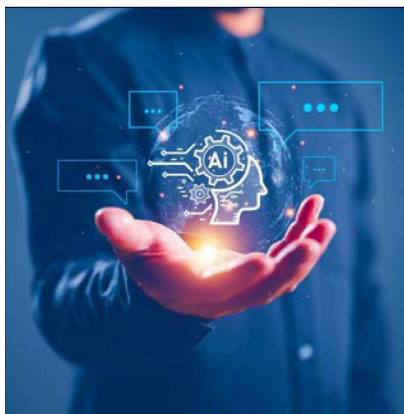


## Use Case

- Efficiency
  - Time saving
  - Cost saving
- Ease of implementation
- Client demands (outside counsel guidelines)

3

3



## Overall Concerns

- Confidentiality/privilege
- Accuracy
- Security
- Laws/Court rules—use of AI and evidentiary standards
- Client restrictions (outside counsel guidelines)
- Fees
- Competence/supervision

4

4



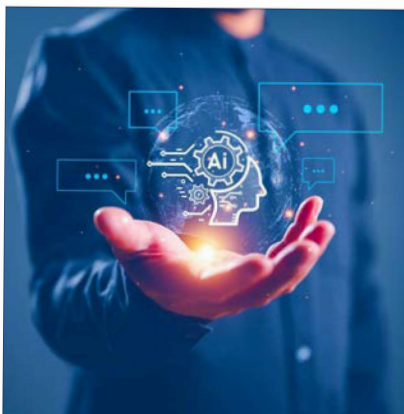
## Issues Overview

### Big issues

- Input
- Output

5

5



## Issues Overview

### Input

- Must submit a prompt
- Facts matter
- Risk: confidentiality, privilege, security, poor or incomplete query

6

6

Find the full text of this and thousands of other resources from leading experts in dozens of legal practice areas in the [UT Law CLE eLibrary \(utcle.org/elibrary\)](https://utcle.org/elibrary)

Title search: A View from ALAS on AI in Law Practice

Also available as part of the eCourse

[2024 Advanced Patent Law \(Austin\) eConference](#)

First appeared as part of the conference materials for the  
29<sup>th</sup> Annual Advanced Patent Law Institute session

"A View from ALAS on AI in Law Practice"