

THE CRESCENT

# COVID-19 RESPONSE

We're all in this together

1

## OUR COMMITMENT TO YOU

Property Management Commitment

Building Preparation

Control Access

Social Distancing

Retail

Preparing Your Workforce

2

# Property Management Commitment

## STAY CONNECTED

Customers will receive weekly newsletters and frequent property management communications on COVID-19 initiatives.

## SAFETY PROTOCOL

Crescent Management instituted a protocol for our team that requires the wearing of face coverings and gloves in customer suites and common areas.

## CONTRACTOR SAFETY

All contractors working in the building are required to adhere to the protocols regarding personal protective equipment and temperature monitoring set out by the Dallas County Commissioner.

WE ARE  
PREPARED  
FOR YOUR  
RETURN

# Social Responsibility

PLEASE KEEP YOUR SOCIAL DISTANCING  
TO 6' FROM EACH OTHER THROUGHOUT  
THE BUILDING FOR EVERYONE'S SAFETY,  
INCLUDING THE RESTROOMS.

5

## How to stay healthy and avoid the spread of COVID-19



Wash your hands regularly  
for 20 seconds



Avoid touching  
your face



Avoid close contact  
with others



Use tissues and dispose  
immediately after use



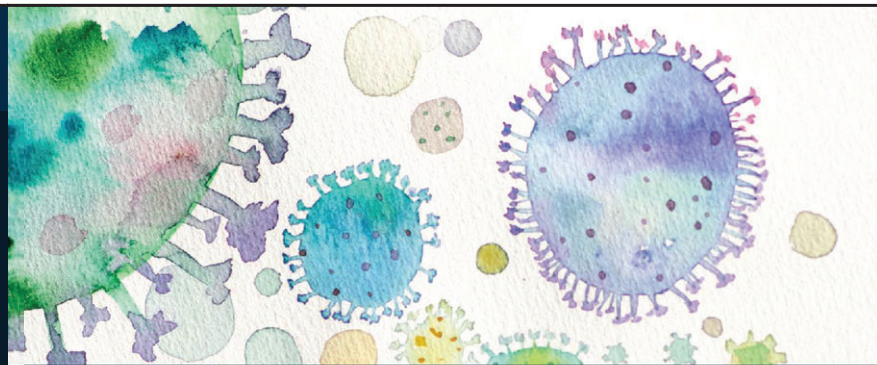
Stay home  
when sick



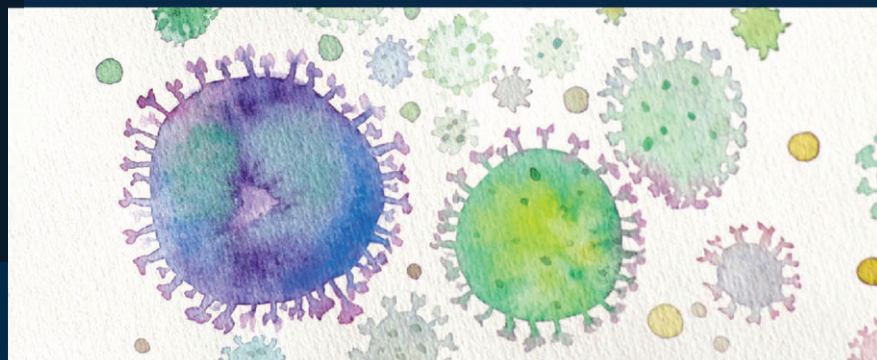
Wipe high-touch  
surfaces often



Cover your mouth when  
coughing or sneezing



## STOP THE SPREAD



6

Find the full text of this and thousands of other resources from leading experts in dozens of legal practice areas in the [UT Law CLE eLibrary \(utcle.org/elibrary\)](https://utcle.org/elibrary)

## Title search: The Crescent Covid-19 Response

First appeared as part of the conference materials for the  
2020 Bernard O. Dow Leasing Institute session

"Legal Issues Related to COVID-19 Entry and Creating a Clean and Safe Work Environment"