

Health Equity and the Social Determinants of Health



UT School of Law Health Law Conference

April 6, 2023

1

What is Health?

- **World Health Organization**

Health is a state of complete physical, mental and social well-being and not merely the absence of disease or infirmity

- **Healthy People 2030 – U.S. Department of Health & Human Services**

Seeks to attain healthy, thriving lives and well-being free of preventable disease, disability, injury, and premature death...improve the health and well-being of all

2

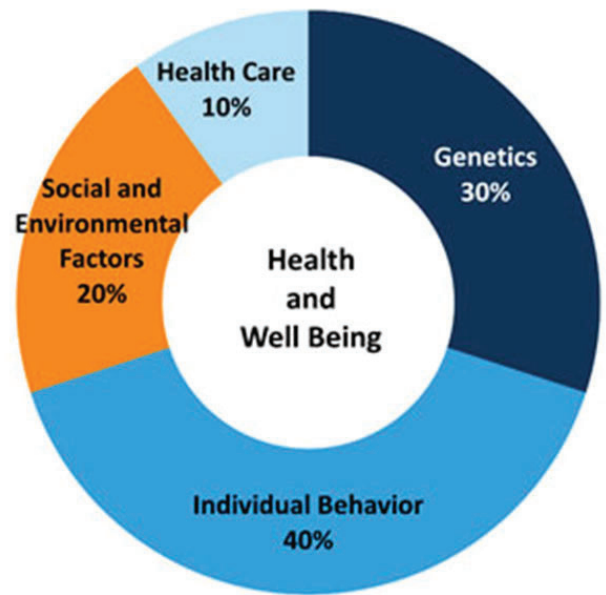


2

What Influences Health?

Our health is influenced by many variables, including categories including:

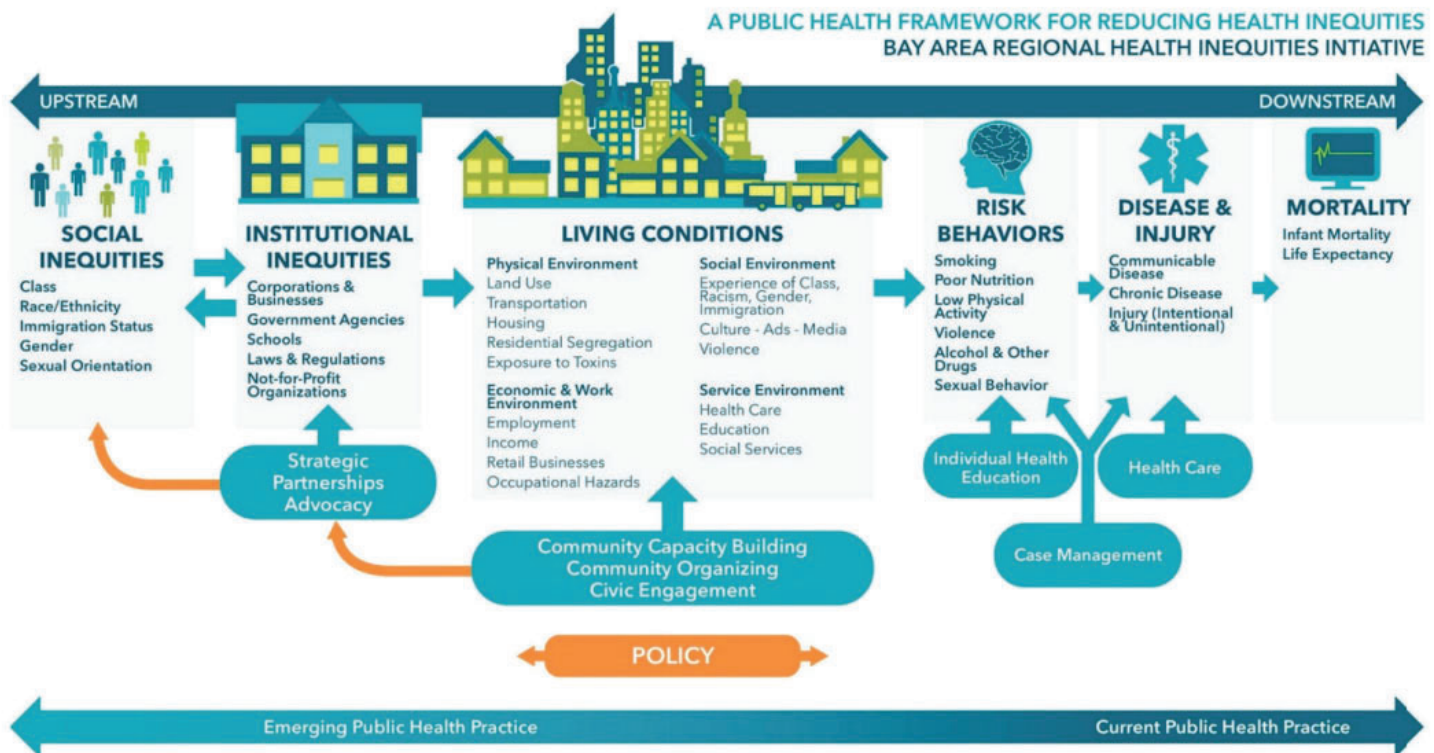
- Genetics
- Behavior
- Environmental exposures
- Healthcare
- Social factors



Kaiser Family Foundation

3

3



4

4

What are the Social Determinants of Health?

- **World Health Organization**

Conditions in which people are born, grow, work, live, and age, and the wider set of forces and systems shaping the conditions of daily life

- **Healthy People 2030**

Conditions in the environments in which people are born, live, learn, work, play, worship, and age that affect a wide range of health, functioning, and quality-of-life outcomes and risks

- “Social Drivers of Health”
- “Non-Medical Drivers of Health”
- “Health Related Social Needs”



5

5

Social Determinants of Health

Economic Stability	Neighborhood and Built Environment	Education Access and Quality	Social and Community Context	Health Care Access and Quality
Employment Housing Instability Food Insecurity Poverty <u>HP 2030 Goal</u> Help people earn steady incomes that allow them to meet their health needs.	Access to Foods that Support Healthy Eating Patterns Quality of Housing Environmental Conditions Crime & Violence <u>HP 2030 Goal</u> Create neighborhoods that promote health & safety	Early Childhood Ed High School Graduation Enrollment in Higher Education Literacy <u>HP 2030 Goal</u> Increase educational opportunities and help children and adolescents do well in school.	Social Cohesion Civic Participation Discrimination Incarceration <u>HP2030 Goal</u> Increase social and community support.	Health Coverage Access to Health Services & Quality Health Literacy Provider Linguistic and cultural competency <u>HP2030 Goal</u> Increase access to comprehensive, high-quality health care services.

Kaiser Family Foundation



6

6

Health Outcomes
Mortality, Morbidity, Life Expectancy, Health Care Expenditures, Health Status, Functional Limitations

Find the full text of this and thousands of other resources from leading experts in dozens of legal practice areas in the [UT Law CLE eLibrary \(utcle.org/elibrary\)](https://utcle.org/elibrary)

Title search: Health Equity and the Social Determinants of Health

First appeared as part of the conference materials for the
34th Annual Health Law Conference session

"Addressing Health Equity and the Social Determinants of Health"