

NOVEMBER 2024

UT LAW CLE

 **TEXAS Law**
The University of Texas at Austin
School of Law

A VIEW FROM ALAS ON AI IN LAW PRACTICE

INTELLIGENCE STILL REQUIRED

RANDY J. CURATO

Vice President—Senior Loss Prevention Counsel
ALAS Ltd.

1

UT LAW CLE

 **TEXAS Law**

Quick Questions

- | | |
|--------------------------------|----------------------------|
| • Can you use GenAI? | YES |
| • Must you use GenAI? | NO (not yet) |
| • Can you ignore GenAI? | NO |
| • Must I tell client if I use? | YES (for now) |
| • Should I use GenAI? | That is the big issue. . . |
| • How? | With caution |

2

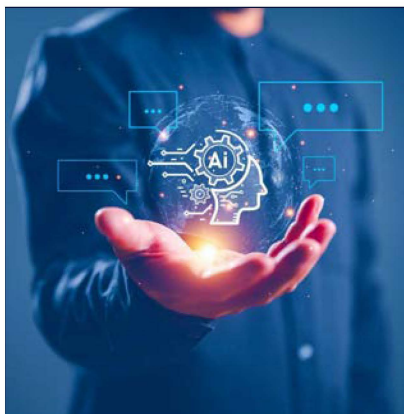


Use Case

- Efficiency
 - Time saving
 - Cost saving
- Ease of implementation
- Client demands (outside counsel guidelines)

3

3



Overall Concerns

- Confidentiality/privilege
- Accuracy
- Security
- Laws/Court rules—use of AI and evidentiary standards
- Client restrictions (outside counsel guidelines)
- Fees
- Competence/supervision

4

4



Issues Overview

Big issues

- Input
- Output

5

5



Issues Overview

Input

- Must submit a prompt
- Facts matter
- Risk: confidentiality, privilege, security, poor or incomplete query

6

6

Find the full text of this and thousands of other resources from leading experts in dozens of legal practice areas in the [UT Law CLE eLibrary \(utcle.org/elibrary\)](https://utcle.org/elibrary)

Title search: A View from ALAS on AI in Law Practice

First appeared as part of the conference materials for the
29th Annual Advanced Patent Law Institute session
"A View from ALAS on AI in Law Practice"