



Acute Spinal Injury: Evaluation, Care, and Long Term Considerations

Joe G. Gonzales, MD, FAAPMR

August 18, 2017

© Copyright 2017 – Physician Life Care Planning, LLC

The Car Crash Seminar

Joe G. Gonzales MD, FAAPMR, CLCP, CPLCP

- Board Certified Physical Medicine & Rehabilitation, Pain Medicine, and Occupational and Environmental Medicine
- Certified Life Care Planner (CLCP), and Certified Physician Life Care Planner (CPLCP) with 25+ Years of Life Care Planning Experience
- Founder of the Texas Physical Medicine & Rehabilitation Institute, San Antonio, TX
- Founder & Medical Director of Physician Life Care Planning, LLC
- Chairman of the American Academy of Physician Life Care Planners

© Copyright 2017 – Physician Life Care Planning, LLC

The Car Crash Seminar

“The Crash”

Common Types of Accidents

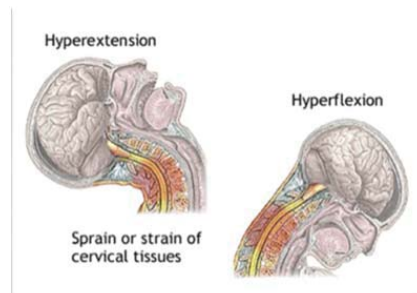
1. Rear-end collision (whiplash)
2. Side-impact collision (T-bone)
3. Side-swipe collision (lateral flexion)
4. Vehicular rollover (multiple injuries)
5. Head-on collision (Often fatalities)
6. Multiple vehicle collision (Pile-ups)



Mechanisms

Common Mechanisms of Injury:

1. Axial Compression
2. Flexion/Hyperflexion
3. Extension/Hyperextension
4. Rotation
5. Lateral flexion/hyperflexion
6. Distraction
7. Penetration



Common Car Crash Injuries

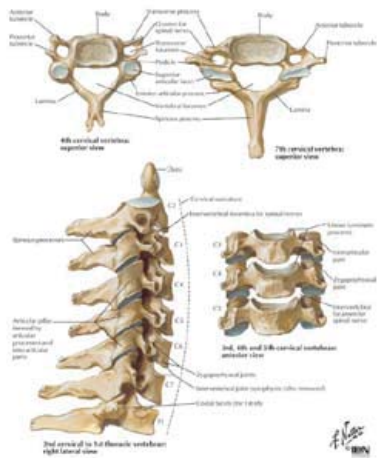
1. Head and brain injury
2. Spinal injury
 - a. Cervical, thoracic, lumbar, sacrococcygeal
 - b. Spinal cord
3. Chest, abdominal, arm, leg, and pelvic injuries
4. Psychological trauma
5. Special considerations, e.g. impact on age and comorbidities



Overview of Spinal Anatomy

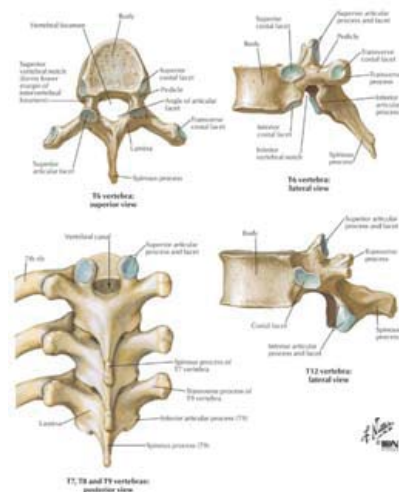


Cervical Spine



- Small vertebral bodies
- Extensive joint surfaces

Thoracic Spine



- Rib bearing vertebrae
- Designed to remain stiff and straight

Find the full text of this and thousands of other resources from leading experts in dozens of legal practice areas in the [UT Law CLE eLibrary \(utcle.org/elibrary\)](http://utcle.org/elibrary)

Title search: Acute Spinal Evaluation, Care, and Long Term Considerations

Also available as part of the eCourse

[2017 The Car Crash eConference](#)

First appeared as part of the conference materials for the
2017 The Car Crash Seminar session

"Acute Spinal Evaluation, Care, and Long Term Considerations"