

Identifying Products Liability Issues in Motor Vehicle Accidents

Muhammad S. Aziz
Abraham, Watkins, Nichols, Sorrels, Agosto, & Aziz
800 Commerce Street
Houston, TX 77002

Types of Claims

- Design Defects
- Manufacturing Defects
- Failure to Warn
- Breach of Warranty

Identifying Products Liability Cases

- Minor Collision, Catastrophic Injury
- Multiple Victims, But Only One Seriously Injured
- Restrained Occupants Seriously Injured or Ejected

Types of Defects

- Defective Airbags
- Crashworthiness
- Defective Seatbacks
- Defective Restraint System

Case Study 1: Defective Airbag

Factual Background

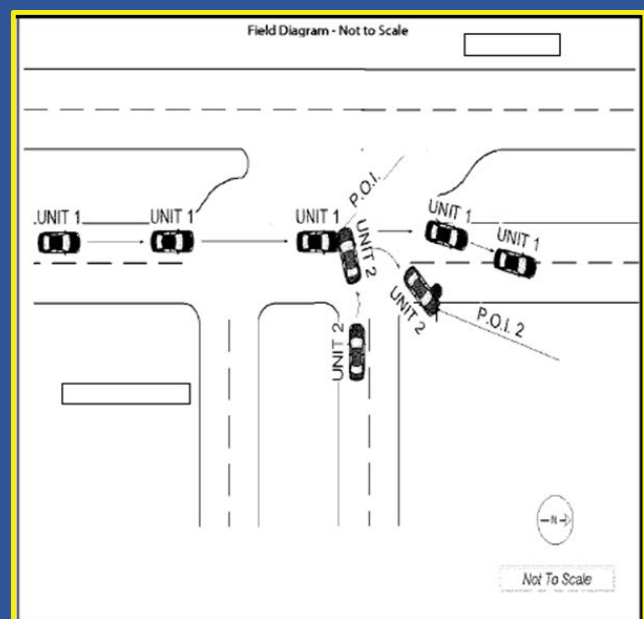
Investigator's Narrative Opinion of What Happened
(Attach Additional Sheets if Necessary)

UNIT 1 WAS TRAVELLING NORTHBOUND ON [] IN THE LEFT LANE. UNIT 2 WAS ATTEMPTING TO ENTER THE INTERSECTION BY MAKING A LEFT HAND TURN FROM [] UNIT 1 STRUCK THE FRONT LEFT QUARTER PANEL OF UNIT 2 CAUSING UNIT 2 TO SPIN AND STRIKE A STREET/STOP SIGN AT THE NORTH CORNER OF THE INTERSECTION. UNIT 1 CONTINUED TRAVELLING NORTH STRIKING THE LEFT CURB OF [] AND STOPPING IN THE MIDDLE OF BOTH NORTHBOUND LANES. DRIVER OF UNIT 1 WAS TRANSPORTED FOR A MEDIUM LACERATION TO THE RIGHT CHEST.

Field Diagram - Not to Scale

The diagram illustrates a four-way intersection. A north arrow is located in the bottom right corner. Unit 1 is shown in two positions: first, approaching the intersection from the south in the left lane, and second, stopped in the middle of the northbound lanes after the collision. Unit 2 is shown in two positions: first, approaching from the west on a left-turn path, and second, spun around and struck a stop sign at the north corner of the intersection. Points of Impact (P.O.I.) are marked with arrows indicating the collision points between the two units. A dashed line indicates the path of Unit 2's turn. A rectangular box is present on the west side of the intersection, and another is on the north side. The text 'Not To Scale' is at the bottom right.

UNIT 1 WAS TRAVELLING NORTHBOUND ON [REDACTED] IN THE LEFT LANE. UNIT 2 WAS ATTEMPTING TO ENTER THE INTERSECTION BY MAKING A LEFT HAND TURN FROM [REDACTED] UNIT 1 STRUCK THE FRONT LEFT QUARTER PANEL OF UNIT 2 CAUSING UNIT 2 TO SPIN AND STRIKE A STREET/STOP SIGN AT THE NORTH CORNER OF THE INTERSECTION. UNIT 1 CONTINUED TRAVELLING NORTH STRIKING THE LEFT CURB OF [REDACTED] AND STOPPING IN THE MIDDLE OF BOTH NORTHBOUND LANES. DRIVER OF UNIT 1 WAS TRANSPORTED FOR A MEDIUM LACERATION TO THE RIGHT CHEST.



Find the full text of this and thousands of other resources from leading experts in dozens of legal practice areas in the [UT Law CLE eLibrary \(utcle.org/elibrary\)](http://utcle.org/elibrary)

Title search: Identifying Products Liability Issues in Motor Vehicle Accidents

Also available as part of the eCourse

[2018 The Car Crash eConference](#)

First appeared as part of the conference materials for the
2018 The Car Crash Seminar session
"Red Flag Injuries/Auto Product Liability"