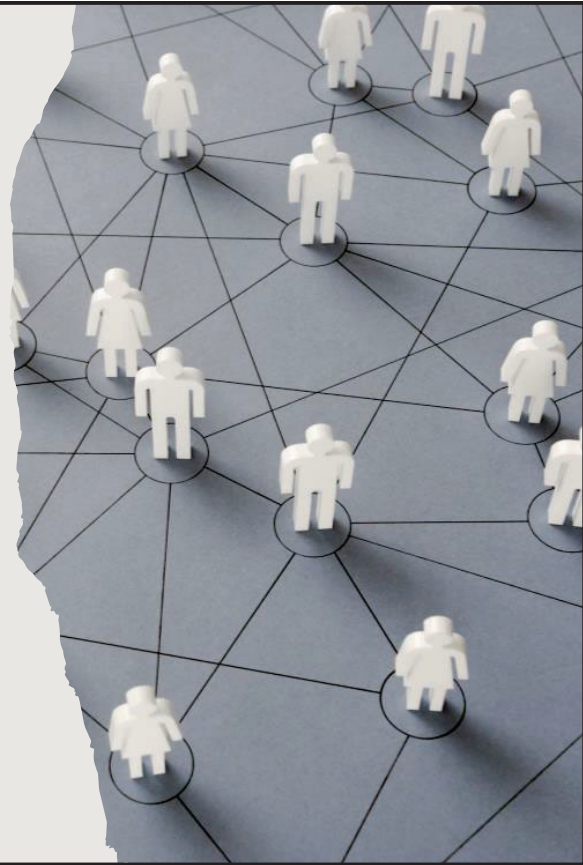


# EFFECTS OF ISOLATION DURING THE COVID-19 PANDEMIC FOR OLDER ADULTS

Amber Gum, PhD

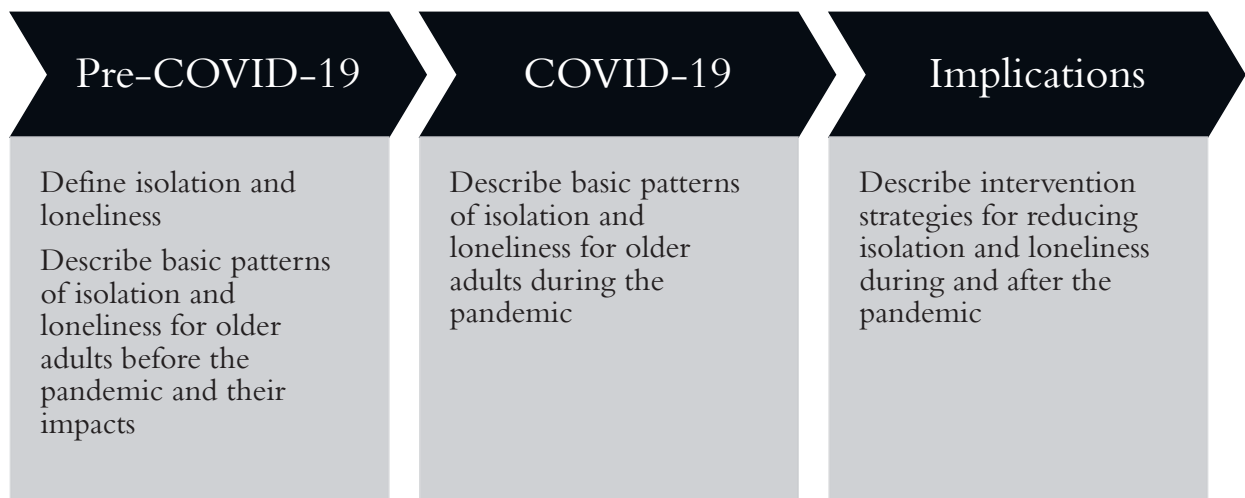
Professor

Department of Mental Health Law & Policy



1

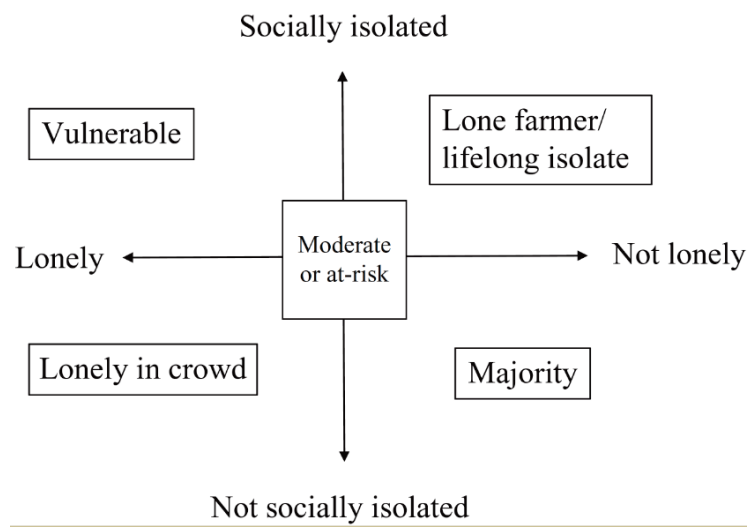
## AGENDA & OBJECTIVES



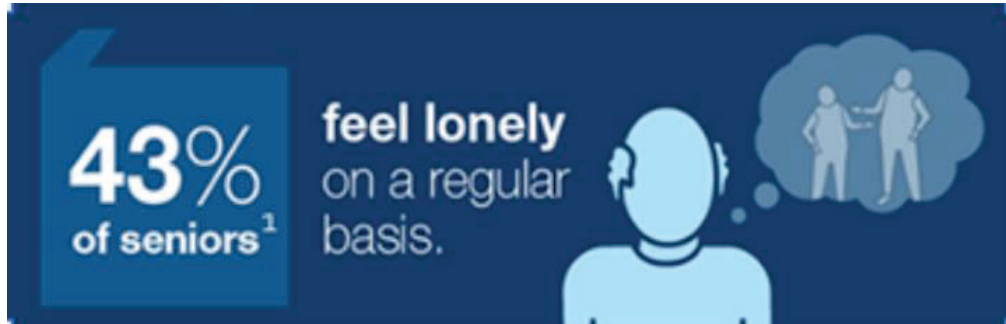
2

PRE-COVID-19

DEFINITIONS:  
ISOLATION & LONELINESS



## PREVALENCE



<https://www.hrsa.gov/enews/past-issues/2019/january-17/loneliness-epidemic>  
Holt-Lunstad, 2017

5

## RISK FACTORS

- Isolated & lonely:
  - Older
  - Widowed
  - Living alone
  - Poor health
  - Low income
- Lonely:
  - Limited social network
  - Low level of social activity
  - Poor health
  - Depressed
  - Caregivers
  - Negative/toxic relationships
  - High reliance/expectations
  - Institutionalized



Holt-Lunstad, 2017; Dahlberg et al., 2022

6

Find the full text of this and thousands of other resources from leading experts in dozens of legal practice areas in the [UT Law CLE eLibrary \(utcle.org/elibrary\)](https://utcle.org/elibrary)

## Title search: Effects of Isolation During the Covid-19 Pandemic for Older Adults

Also available as part of the eCourse

[2022 Special Needs Trusts eConference](#)

First appeared as part of the conference materials for the  
18<sup>th</sup> Annual Changes and Trends Affecting Special Needs Trusts session  
"Effects of Isolation During the Covid-19 Pandemic for Older Adults"