

Behavioral Health: Addressing Needs Through Local Partnerships

33rd Annual Health Law Conference
April 7, 2022



Sally E. Taylor, MD
Senior Vice President/Chief of Behavioral Health
University Health, San Antonio, Texas
Chair, Behavioral Health Committee, STRAC








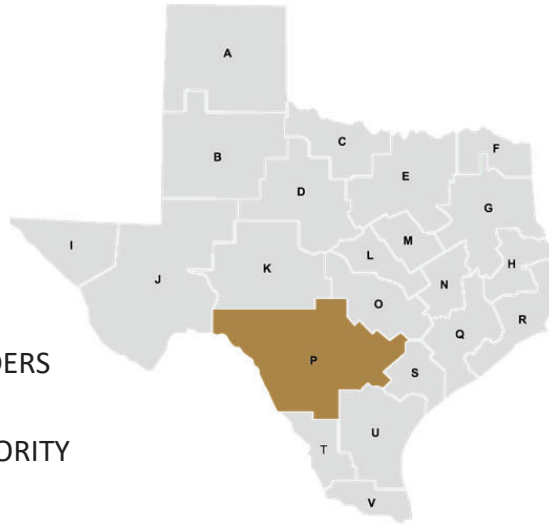
Southwest Texas Regional Advisory Council:
Southwest Texas Crisis Collaborative









STRAC: Who We Are

Mission: To reduce death / disability related to trauma, disaster, and *acute illness* through implementation of *well-planned and coordinated regional emergency response systems*.

-  22 COUNTIES
26,000 SQUARE MILES
-  2.4M PEOPLE
-  71 EMS AGENCIES
-  4 AIR MEDICAL PROVIDERS
-  PUBLIC HEALTH AUTHORITY



-  63 HOSPITALS
 -  2 LVL I TRAUMA CENTERS
 -  16 CARDIAC CENTERS
 -  17 STROKE CENTERS
 -  BEHAVIORAL HEALTH
- 

STRAC Organization

Acute Care

- Trauma/Cardiac/Stroke
- EMS and EMS Medical Directors
- Air Medical
- Pediatric
- MIH
- Perinatal
- MEDCOM
- EMS EMR
- Clinical Registries

Behavioral Health

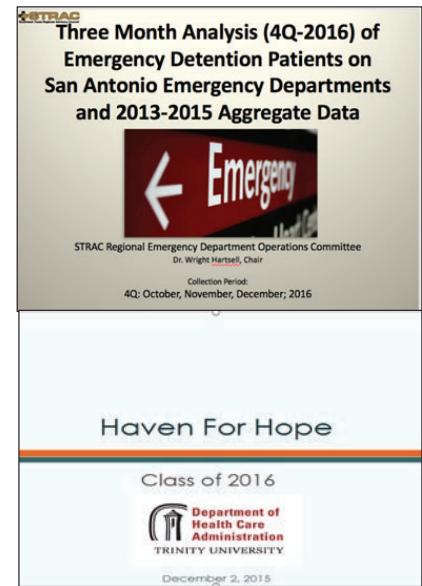
- Southwest Texas Crisis Collaborative Steering Committee
- Law Enforcement Navigation
- Homeless Acute Care
- ER Crisis Transfer
- Social Determinants of Health
- Data Collection

Emergency Preparedness & Response

- Healthcare Coalition
- Regional Medical Operations Center
- Rescue Team
- Logistics
- EMTF
- Disaster IT
- Patient Tracking
- AssetTrak

STCC Background: What We Learned (2016)

- 9,000+ Emergency Detentions annually
- Nearly 1/2 *only* needed a medical screening prior to psychiatric care
- Were going to hospital ERs & became part of the national “boarding” problem
- Lack of integration between medical/behavioral health care system on the Haven for Hope homeless campus
- Haven for Hope: #1 spot for 9-1-1 calls



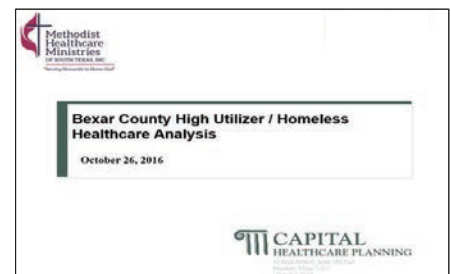
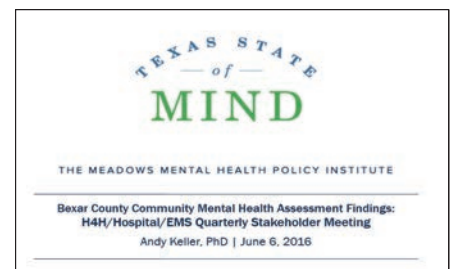
STCC Background: What We Learned

- Study of BH System in Bexar County
- Commissioned and funded by MHM
- Numerous findings, most notably:

Cross-payer effort must be developed for **assertive and intensive ongoing services** for the highest utilizers of:

- Jail
- Crisis Services
- Homeless Shelters
- Emergency Response System
- Hospital Emergency Departments
- Inpatient Care

What we knew anecdotally to be problems in our system now had true COSTS associated.



Find the full text of this and thousands of other resources from leading experts in dozens of legal practice areas in the [UT Law CLE eLibrary \(utcle.org/elibrary\)](https://utcle.org/elibrary)

Title search: Behavioral Health: Addressing Needs Through Local Partnerships

Also available as part of the eCourse

[Hooked on CLE: June 2022](#)

First appeared as part of the conference materials for the
33rd Annual Health Law Conference session

"Texas' Mental Health System: Overview and Local Solutions to Address Gaps"