



We Are Family- Or Are We?

Legal Challenges in Defining “Family” in Municipal Zoning Ordinances

Terrence S. Welch
Brown & Hofmeister, L.L.P.
740 E. Campbell Road, Suite 800
Richardson, Texas 75081
www.bhlaw.net

♪♪ **We Are Family** ♪♪ **-Sister Sledge**

We are family
I got all my sisters with me
We are family
Get up everybody and sing

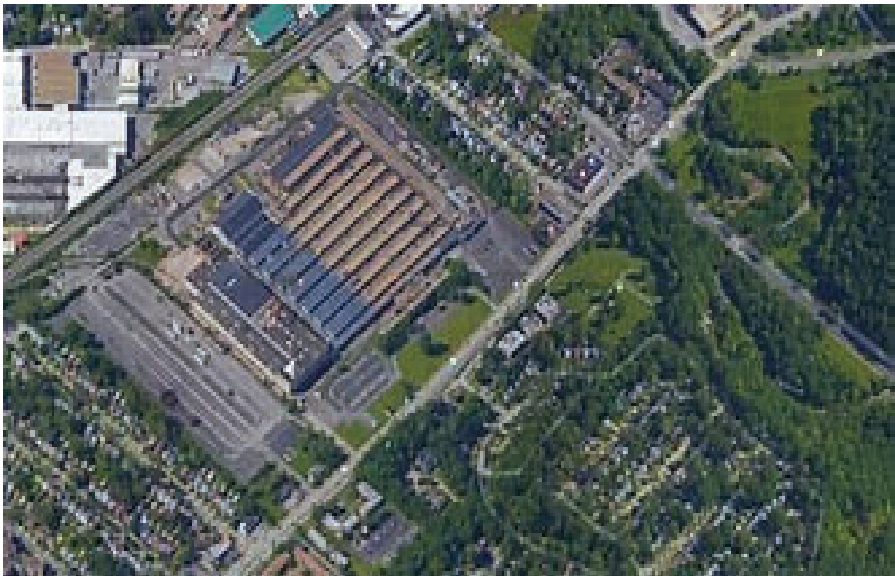
Everyone can see we're together
As we walk on by
(And) and we fly just like birds of a feather
I won't tell no lie
(All) all of the people around us they say
Can they be that close?
Just let me state for the record
We're giving love in a family dose....



A Few Statistics about U.S. Families

	1970	2012
“Family” Households	81%	66%
Married Couple with Children	40%	20%
One-person Households	17%	27%
Average Number of Persons per Household	3.1	2.6

Let's Go Back to Euclid, Ohio in the 1920's



Village of Euclid v. Ambler Realty, 272 U.S. 365 (1926)

1	Supreme Court validated zoning on substantive due process grounds as valid exercise of the police power	
Very deferential to local governments		2
3	Allowed the exclusion of undesirable uses, <u>and protected residential nature of single-family neighborhoods</u>	
"Euclidian" zoning born: concept of separating incompatible land uses		4

Find the full text of this and thousands of other resources from leading experts in dozens of legal practice areas in the [UT Law CLE eLibrary \(utcle.org/elibrary\)](https://utcle.org/elibrary)

Title search: We Are Family, or Are We?

Also available as part of the eCourse

[2022 Land Use eConference](#)

First appeared as part of the conference materials for the
26th Annual Land Use Conference session

"We Are Family, or Are We? "