

A VIEW FROM ALAS ON AI IN LAW PRACTICE

INTELLIGENCE STILL REQUIRED

RANDY J. CURATO

Vice President—Senior Loss Prevention Counsel
ALAS Ltd.

1

Quick Questions

- Can you use GenAI? YES
- Must you use GenAI? NO (not yet)
- Can you ignore GenAI? NO
- Must I tell client if I use? YES (for now)

- Should I use GenAI? That is the big issue. . .
- How? With caution

2

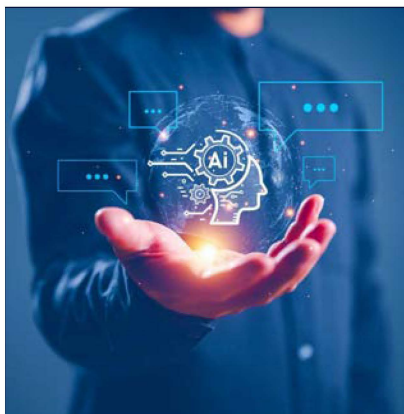


Use Case

- Efficiency
 - Time saving
 - Cost saving
- Ease of implementation
- Client demands (outside counsel guidelines)

3

3



Overall Concerns

- Confidentiality/privilege
- Accuracy
- Security
- Laws/Court rules—use of AI and evidentiary standards
- Client restrictions (outside counsel guidelines)
- Fees
- Competence/supervision

4

4



Issues Overview

Big issues

- Input
- Output

5

5



Issues Overview

Input

- Must submit a prompt
- Facts matter
- Risk: confidentiality, privilege, security, poor or incomplete query

6

6

Find the full text of this and thousands of other resources from leading experts in dozens of legal practice areas in the [UT Law CLE eLibrary \(utcle.org/elibrary\)](https://utcle.org/elibrary)

Title search: A View from ALAS on AI in Law Practice

Also available as part of the eCourse

[2024 Advanced Patent Law \(Austin\) eConference](#)

First appeared as part of the conference materials for the
29th Annual Advanced Patent Law Institute session

"A View from ALAS on AI in Law Practice"